

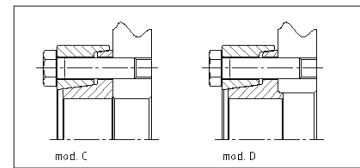
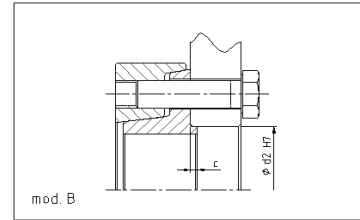
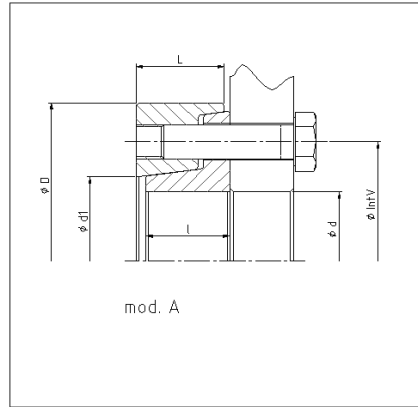
External locking assembly MAV 3022 standard duty

rev. 0

Features:

- for narrow hub connection (ex. sprockets, brake discs)
- 2-part design, 4 models available
- not self-locking
- screws DIN 931/933 grade 10.9
- shaft / hub surface finish $Ra < 3,2 \mu m$
- shaft tolerance: h9
- screws & tapers greased with MoS₂
- shaft & hub contact surfaces: GREASE-FREE and DR\
- transmissible torque is given by min. capacity of shaft/lock.assy or hub/lock.assy contact surfaces
- ⁽¹⁾ screws length for model C and D

Ma: screw tightening torque
Mt: max transmissible torque



Example of order: MAV3022 – 70 x 115 mod. A, B, C or D, hub width for mod. A and B

Dimensions									Screws			Mt	Weight
d	x	D	L	IntV	l	d1	c	d2	no.	size ⁽¹⁾	Ma	Nm	kg
mm	mm	mm	mm	mm	mm	mm	mm	mm			Nm		
12	x	35	11	24	10	13	1,5	14	3	M 6 x 20	12	70	0,1
11	x	35	11	24	10	13	1,5	14	3	M 6 x 20	12	70	
14	x	38	12	26	11	15	1,5	16	3	M 6 x 20	12	80	0,1
13	x	38	12	26	11	15	1,5	16	3	M 6 x 20	12	80	
16	x	41	15	28	14	17	2	18	3	M 6 x 25	12	90	0,1
15	x	41	15	28	14	17	2	18	3	M 6 x 25	12	90	
18	x	44	15	30	14	19	2	20	4	M 6 x 25	12	120	0,1
18	x	44	15	30	14	19	2	20	4	M 6 x 25	12	120	
20	x	47	15	32	14	21	2	22	4	M 6 x 25	12	130	0,2
19	x	47	15	32	14	21	2	22	4	M 6 x 25	12	130	
25	x	50	19	36	18	26	2	27	5	M 6 x 30	12	190	0,2
24	x	50	19	36	18	26	2	27	5	M 6 x 30	12	190	
21	x	50	19	36	18	26	2	27	5	M 6 x 30	12	190	
30	x	60	19	44	18	32	3	32	6	M 6 x 30	12	270	0,3
28	x	60	19	44	18	32	3	32	6	M 6 x 30	12	270	
26	x	60	19	44	18	32	3	32	6	M 6 x 30	12	270	
36	x	72	21	52	20	38	3	38	5	M 8 x 35	30	560	0,5
35	x	72	21	52	20	38	3	38	5	M 8 x 35	30	550	
31	x	72	21	52	20	38	3	38	5	M 8 x 35	30	471	
44	x	80	23	61	22	47	3	46	6	M 8 x 35	30	730	0,6
40	x	80	23	61	22	47	3	46	6	M 8 x 35	30	730	
37	x	80	23	61	22	47	3	46	6	M 8 x 35	30	730	
50	x	90	25	68	24	53	3	53	8	M 8 x 40	30	1.080	0,9
45	x	90	25	68	24	53	3	53	8	M 8 x 40	30	1.080	
42	x	90	25	68	24	53	3	53	8	M 8 x 40	30	1.080	
55	x	100	27	72	26	58	3	58	8	M 8 x 40	30	1.140	1,2
52	x	100	27	72	26	58	3	58	8	M 8 x 40	30	1.140	
45	x	100	27	72	26	58	3	58	8	M 8 x 40	30	1.140	
62	x	110	27	80	26	66	3	63	9	M 8 x 40	30	1.430	1,4
60	x	110	27	80	26	66	3	63	9	M 8 x 40	30	1.430	
50	x	110	27	80	26	66	3	63	9	M 8 x 40	30	1.430	

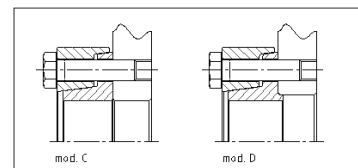
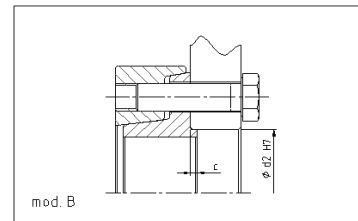
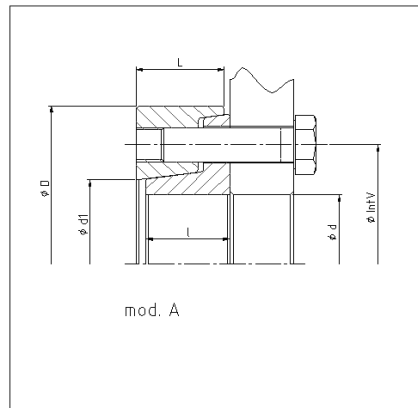
External locking assembly MAV 3022 standard duty

rev. 0

Features:

- for narrow hub connection (ex. sprockets, brake discs)
- 2-part design, 4 models available
- not self-locking
- screws DIN 931/933 grade 10.9
- shaft / hub surface finish $Ra < 3,2 \mu m$
- shaft tolerance: h9
- screws & tapers greased with MoS₂
- shaft & hub contact surfaces: GREASE-FREE and DR\
- transmissible torque is given by min. capacity of shaft/lock.assy or hub/lock.assy contact surfaces
- ⁽¹⁾ screws length for model C and D

Ma: screw tightening torque
Mt: max transmissible torque



Example of order: MAV3022 – 70 x 115 mod. A, B, C or D, hub width for mod. A and B

Dimensions									Screws			Mt	Weight
d	x	D	L	IntV	l	d1	c	d2	no.	size ⁽¹⁾	Ma	Nm	kg
mm	mm	mm	mm	mm	mm	mm	mm	mm			Nm		
70	x	115	27	86	26	72	4	74	9	M 8 x 40	30	1.540	1,4
65	x	115	27	86	26	72	4	74	9	M 8 x 40	30	1.540	
60	x	115	27	86	26	72	4	74	9	M 8 x 40	30	1.540	
80	x	141	29	100	28	84	4	84	10	M 10 x 45	59	3.510	2,2
75	x	141	29	100	28	84	4	84	10	M 10 x 45	59	3.450	
70	x	141	29	100	28	84	4	84	10	M 10 x 45	59	3.370	
90	x	155	35	114	34	94	4	94	12	M 10 x 50	59	4.660	3,4
85	x	155	35	114	34	94	4	94	12	M 10 x 50	59	4.590	
80	x	155	35	114	34	94	4	94	12	M 10 x 50	59	4.520	
100	x	170	40	124	39	104	4	104	12	M 12 x 60	100	7.440	5
95	x	170	40	124	39	104	4	104	12	M 12 x 60	100	7.330	
90	x	170	40	124	39	104	4	104	12	M 12 x 60	100	7.230	
110	x	185	47	136	45	114	5	116	12	M 12 x 70	100	8.120	6
105	x	185	47	136	45	114	5	116	12	M 12 x 70	100	8.020	
100	x	185	47	136	45	114	5	116	12	M 12 x 70	100	7.910	
125	x	215	50	160	48	134	5	126	12	M 16 x 75	250	18.010	9
120	x	215	50	160	48	134	5	126	12	M 16 x 75	250	17.800	
115	x	215	50	160	48	134	5	126	12	M 16 x 75	250	17.600	
140	x	230	54	172	52	146	5	146	14	M 16 x 80	250	22.780	11
135	x	230	54	172	52	146	5	146	14	M 16 x 80	250	22.530	
130	x	230	54	172	52	146	5	146	14	M 16 x 80	250	22.290	
160	x	263	58	192	56	165	5	165	15	M 16 x 80	250	27.900	15
155	x	263	58	192	56	165	5	165	15	M 16 x 80	250	27.640	
150	x	263	58	192	56	165	5	165	15	M 16 x 80	250	27.380	
170	x	290	62	204	61	175	5	175	16	M 16 x 90	250	32.460	21
165	x	290	62	204	61	175	5	175	16	M 16 x 90	250	32.180	
160	x	290	62	204	61	175	5	175	16	M 16 x 90	250	31.910	
180	x	300	62	218	61	185	5	185	18	M 16 x 90	250	38.040	22
175	x	300	62	218	61	185	5	185	18	M 16 x 90	250	37.720	
170	x	300	62	218	61	185	5	185	18	M 16 x 90	250	37.410	

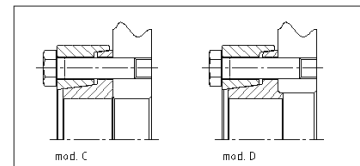
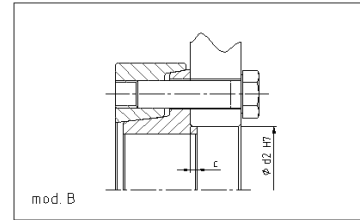
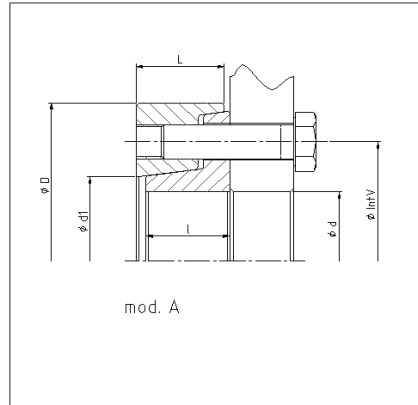
External locking assembly MAV 3022 standard duty

rev. 0

Features:

- for narrow hub connection (ex. sprockets, brake discs)
- 2-part design, 4 models available
- not self-locking
- screws DIN 931/933 grade 10.9
- shaft / hub surface finish $Ra < 3,2 \mu m$
- shaft tolerance: h9
- screws & tapers greased with MoS₂
- shaft & hub contact surfaces: GREASE-FREE and DR\
- transmissible torque is given by min. capacity of shaft/lock.assy or hub/lock.assy contact surfaces
- ⁽¹⁾ screws length for model C and D

Ma: screw tightening torque
Mt: max transmissible torque



Example of order: MAV3022 – 70 x 115 mod. A, B, C or D, hub width for mod. A and B

Dimensions									Screws			Mt	Weight
d	x	D	L	IntV	l	d1	c	d2	no.	size ⁽¹⁾	Ma	Nm	kg
mm	mm	mm	mm	mm	mm	mm	mm	mm			Nm		
190	x	320	79	232	76	195	5	195	15	M 20 x 110	490	52.760	32
185	x	320	79	232	76	195	5	195	15	M 20 x 110	490	52.350	
180	x	320	79	232	76	195	5	195	15	M 20 x 110	490	51.950	
200	x	340	79	246	76	210	5	210	16	M 20 x 110	490	59.630	37
195	x	340	79	246	76	210	5	210	16	M 20 x 110	490	59.190	
190	x	340	79	246	76	210	5	210	16	M 20 x 110	490	58.770	
220	x	370	98	270	95	230	5	230	14	M 24 x 130	840	81.950	53
210	x	370	98	270	95	230	5	230	14	M 24 x 130	840	80.870	
200	x	370	98	270	95	230	5	230	14	M 24 x 130	840	79.800	

Information subject to change without prior notification. © MAV S.p.A.